

LoFric Hydro-Kit – male users

LoFric[®] Hydro-Kit™ single use, hydrophilic urinary catheter with salt solution for activation.

For short and long term bladder management with intermittent urinary catheterization.

LoFric catheters are for prescription use only.

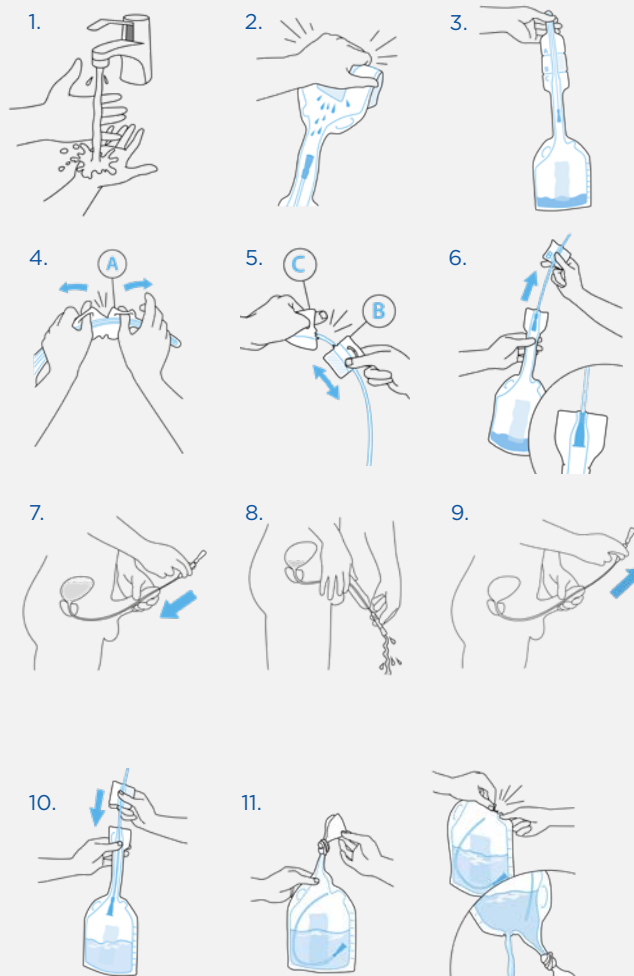
Ensure to follow the advice and training on the catheterization procedure given by your Healthcare Professional, before use.

Please refer to instructions for use included in the package, for important information and complete instructions.

Contact your prescriber if you experience difficulties.

Instructions for use

1. Wash your hands thoroughly with soap and water.
2. Hold the product upright. Fold the sachet and squeeze. Let the salt solution run down to the catheter.
3. Turn the product upside down to allow the salt solution to drain into the collection bag.
4. Use loops at indentation “A” to open and uncover the tip of the catheter.
5. Use loops at indentation “B/C” to open. Use section “B” as insertion grip.
6. Gently pull the catheter out of the package until the funnel comes to a stop, to seal between catheter and collection bag.
7. Lift the penis towards the stomach to straighten the urethra. Slowly insert the catheter into the urethra. When urine begins to flow, insert the catheter slightly more to ensure both eyelets are inside the bladder.
8. Angle the penis down as urine begins to flow through the catheter.
9. When the urine flow stops, slowly withdraw the catheter a little bit. If urine starts to flow again, wait until it has stopped to ensure complete bladder emptying. Then remove the catheter completely.
10. Push the catheter back into the collection bag.
11. Before disposal, empty the bag through the neck, or tie a knot to seal the bag and tear at the indentation. Dispose appropriately (local regulations may vary).

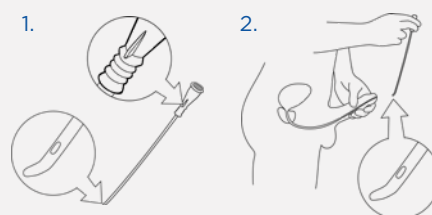


Special instruction for Tiemann/Coudé catheter, with slightly curved tip.

A special technique is required when using a Tiemann/Coudé. Speak to your healthcare professional for training and advice.

1. Note where the marker on the funnel is in relation to the curved catheter tip before inserting the catheter. It will guide you keeping the curved tip in the right direction during use.
2. Keep the curved tip upwards towards the stomach during insertion and throughout catheterization, including withdrawal. Or follow specific instructions given by your healthcare professional.

Tiemann/Coudé



At Wellspect we develop innovative continence care solutions that change people's lives. We are committed to inspire our users to build self-confidence and independence as well as good health and well-being. We have been leading the industry for over 30 years with our product brands LoFric® and Navina™. We create reliable and user-friendly products for bladder and bowel management with as little environmental impact as possible. We passionately strive to become climate neutral and work closely together with users and healthcare professionals who constantly inspire us to improve our products and services in a sustainable way, now and for the future.

Wellspect. A real difference.

For more information about our products and our initiative Advancing Continence Care Together (ACCT), please visit [Wellspect.com](https://www.wellspect.com).

Join the conversation on Facebook and Instagram.

[wellspect.com](https://www.wellspect.com)

